

County Surveyor's Record, Tillamook County, Oregon

CHAINS

RESTORED CORNER FOR STATE OF OREGON--DEPARTMENT OF FORESTRY

One Quarter corner common to Sections
10 and 11, T3N, R6W, W.M., Tillamook
County, Oregon.

ORIGINAL

Post (missing) from which a:

- 36" Hemlock bears N5°W 14 1/2 lks.; now a badly rotted 30" hemlock stump.
- 12" Yew bears S40°E 6 1/2 lks.; now a 14" yew stub with ~~axe~~ marks visible.
- Spring branch bears South 320.1; crs. West; in place.
- 24" Hemlock line tree bears South 303.6'; missing.
- 4 lk. creek bears North 151.8; crs N35°E;; in place.
- Original blaze bears South 71.6'.

RESTORED

VAR 21 1/2°E

Set 2" x 36" aluminum pipe with 3 3/4" aluminum ~~blaze~~ cap marked "STATE OF OREGON DEPARTMENT OF FORESTRY T3N R6W 1/4 S10 S11 1982 RS1662",

35 inches in ground and from which a:

- 33" Hemlock bears S50 1/4°W 23.9 ft. to face; scribed 1/4 S10 BT.
- 20" Fir bears S63 1/4°E 18.0 ft. to face; scribed 1/4 S11 BT.

Set 4" x 4" x 60" white painted Cedar post N.W. 1.0 ft. from corner pipe. Oregon State Forestry Department metal location poster on 33" Hemlock BT.

DATED: July 14, 1982

RESTORED BY: Steve Ellis under my direction
Steve Ellis, Transimant

REGISTERED
PROFESSIONAL
LAND SURVEYOR

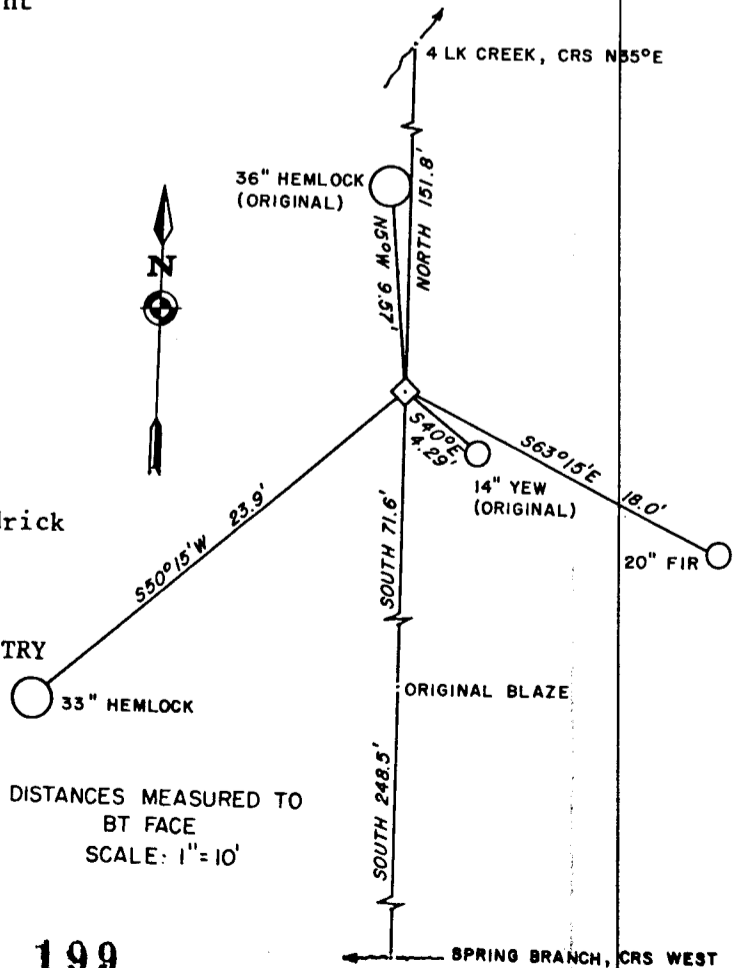
Loren R. Steele

OREGON
JULY 14, 1978
LOREN R. STEELE
1662



PRESENT AND WITNESSED BY: Jr. Hendrick

STATE OF OREGON DEPARTMENT OF FORESTRY
801 Gales Creek Road
Forest Grove, Oregon 97116



DISTANCES MEASURED TO
BT FACE
SCALE: 1" = 10'